



ASHFORD  
& MOULT  
ESTATE AGENTS

ASHFORD  
& MOULT  
ESTATE AGENTS

**£325,000**

**Sanderling Way**

Mansfield, NG19 0GH

## PROPERTY SUMMARY

If you're looking for a home that offers the perfect setting for family life, this impressive four-bedroom detached property could be just what you've been waiting for.

Positioned on a quiet private driveway shared with only a handful of neighbouring homes, it enjoys a peaceful and secluded feel while still providing generous living accommodation throughout.

Step inside and you're welcomed by a bright entrance hall, complete with a handy downstairs WC.

The lounge offers a great space to unwind, while the spacious kitchen/diner is ideal for modern living—filled with natural light and perfectly suited to both everyday use and hosting guests. French doors lead straight out to the rear garden, creating an easy connection between indoor and outdoor spaces.

Upstairs, you'll find four well-sized bedrooms, including a principal bedroom with its own en suite, alongside a stylish family bathroom—making it a great fit for growing families or those needing extra flexibility.

Outside, the property continues to deliver. There's ample off-road parking to the front, while a car port to the side gives access to a detached garage—ideal for storage, secure parking, or even a workspace.

4



2



1





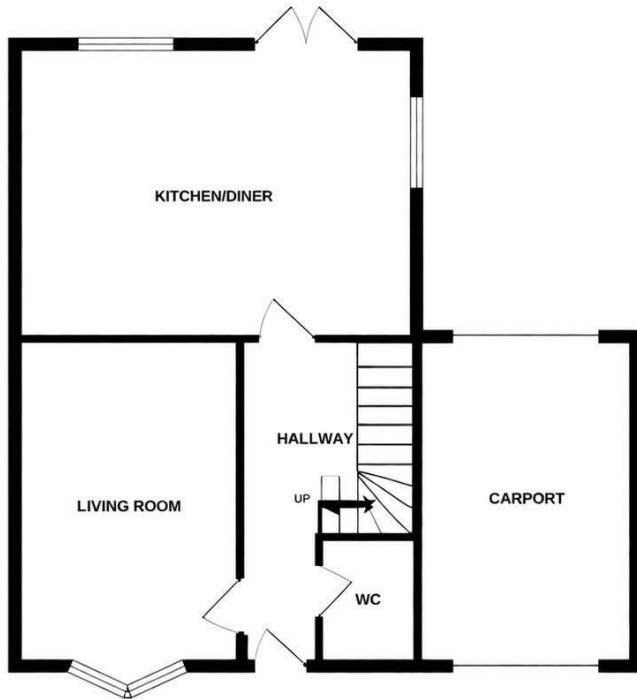
ASHFORD  
& MOULT  
ESTATE AGENTS



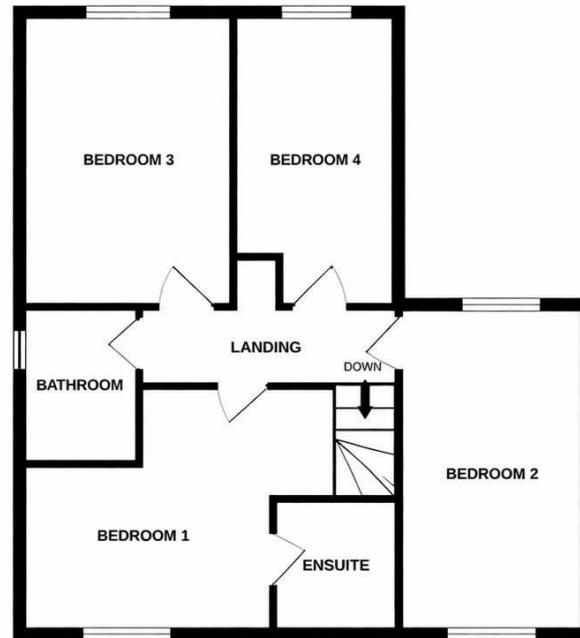


ASHFORD  
& MOULT  
ESTATE AGENTS

GROUND FLOOR  
751 sq.ft. (69.8 sq.m.) approx.



1ST FLOOR  
748 sq.ft. (69.5 sq.m.) approx.



**LOCAL AUTHORITY**

**TENURE**

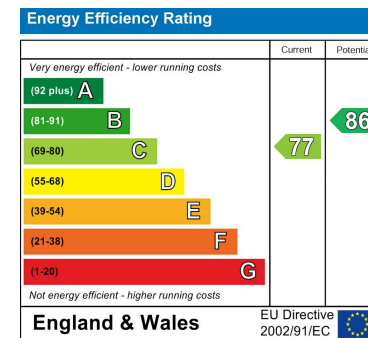
Freehold

**COUNCIL TAX BAND**

D

**VIEWINGS**

By prior appointment only



Agents Note: Whilst every care has been taken to prepare these particulars, they are for guidance purposes only. All measurements are approximate and are for general guidance purposes only and whilst every care has been taken to ensure their accuracy, they should not be relied upon and potential buyers/tenants are advised to recheck the measurements



**OFFICE ADDRESS**

56 Main Street  
Calverton  
Nottinghamshire  
NG14 6FN

**OFFICE DETAILS**

01158 656675  
sales@ashfordandmoulton.co.uk